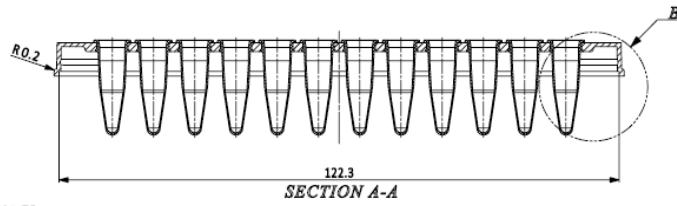


## iST Scientific Exo-Frame Semi- Skirted 96 Well Plate

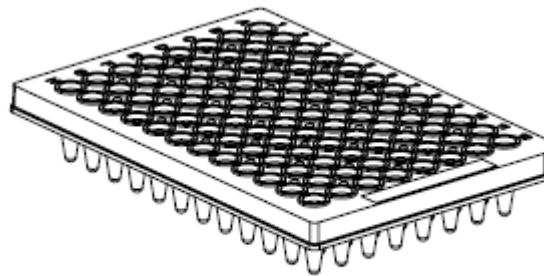
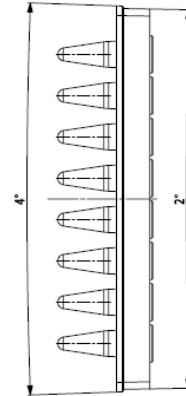
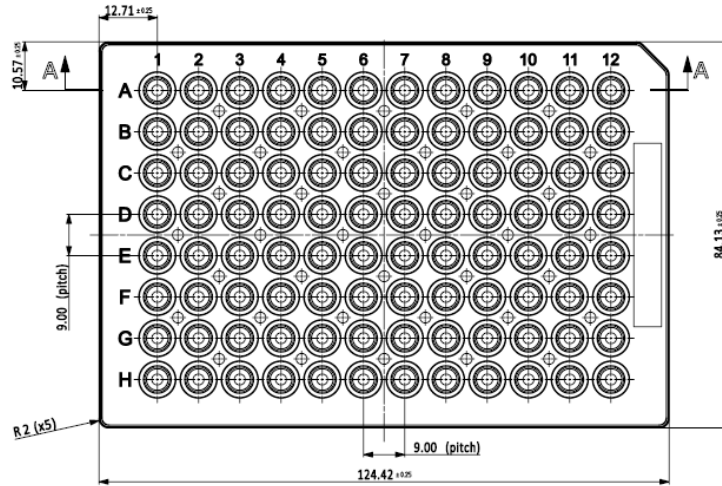
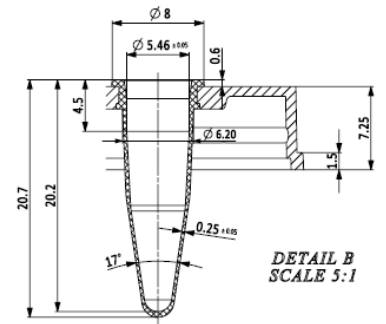


### PRODUCT SPECIFICATIONS

<b>Catalog Numbers:</b>	• IST-601-096ABCT
<b>Product Description:</b>	Semi-skirted 96-well PCR plate with clear wells and grey frame
<b>Frame Colour:</b>	Grey
<b>Product Dimensions:</b>	<ul style="list-style-type: none"><li>• Length: 127.76mm</li><li>• Width: 85.48mm</li><li>• Height: 16.10mm</li></ul>
<b>Key Features:</b>	Low profile PCR plate, with 96W Clear Thin Walled PP tubes, Rigid two-component design eliminates warping and distortion during PCR. Automation friendly.
<b>No. of Wells:</b>	96
<b>Skirt Style:</b>	Full Skirt
<b>Volume (Metric) Well:</b>	0.2ml well volume
<b>Volume(Metric) Usual Working:</b>	0.1ml working volume
<b>Type:</b>	PCR, 96-well Plate
<b>Packaging:</b>	Packaged 10 plates per sleeve, 50 plates per box
<b>MicroBiological Testing:</b>	Free from DNA, RNA, and nucleases



ALL GRID REFERENCES ARE HOT FOILED



SCALE 1:1

**For Research Use Only. Not for use in diagnostic procedure.**



# WolfLabs

**Pricing on any accessories shown can be found by keying the part number into the search box on our website.**

The specifications listed in this brochure are subject to change by the manufacturer and therefore cannot be guaranteed to be correct. If there are aspects of the specification that must be guaranteed, please provide these to our sales team so that details can be confirmed.

**[www.wolflabs.co.uk](http://www.wolflabs.co.uk)**

**Tel : 01759 301142**

**Fax : 01759 301143**

**[sales@wolflabs.co.uk](mailto:sales@wolflabs.co.uk)**

Please contact us if this literature doesn't answer all your questions.